

XEROX®

Technology | Document Management | Consulting Services

Phaser™ 3450

laser printer

Big printer Power priced for the small office



Imaging Supplies Co. Inc

804 Woodland Ave
Sanford, NC 27330

(919) 776 1152

(800) 518 1152

www.imagingsuppliesco.com



www.imagingsuppliesco.com

Professional laser quality. Reliable, versatile and affordable.

The ideal solution for the small workgroup with a wide variety of print jobs (and a tight budget), or the single user with a lot of printing to do.

More printer...

Get the next-level performance and quality without paying more.

- Speeds up to 25 ppm can keep up with your printing demands, even when connected to a busy network.
- A 266 MHz processor with 32 MB RAM (expandable to 160 MB) provides the power to speed through reports, letters, charts and scanned images with ease.
- 12 seconds to your first printed page means your job is done when other printers are just getting started.
- Professional, crisp 1200 dpi Image Quality adds value and impact to your communications. While the toner saver mode will save money on less critical jobs.

...for less.

The Phaser 3450 printer comes with advanced capabilities and more options to tailor it to your needs.

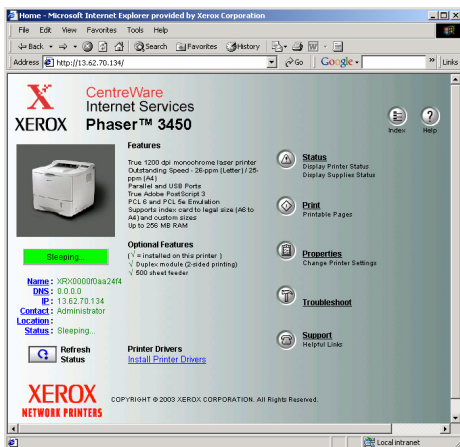
- It is ready to connect the way you want with USB and parallel ports. And for multiple users, 10/100Base-TX Ethernet is standard on the Duplex-Network (DN) configuration.
- With PCL6 and PostScript Level 3 processing, you can print with precision across applications and platforms.
- Two-sided printing improves productivity and reduces paper waste. And convenience tools like N-Up, booklet, and poster printing increase your document options.
- Get more printing done with the large and expandable paper capacity and the ability to reliably print on a range of media and custom sizes.
- A one-year depot warranty and the unmatched Xerox Total Satisfaction Guarantee protect your investment.

Phaser 3450 Laser Printer

Technology that makes printing easy.

Plug-in simplicity for the single user...

- An easy-to-use control panel gives quick access to all print functions.
- The print cartridge is simple to replace. You can choose between standard- or high-capacity depending on your print volume.
- A space-saving design keeps the printer small and able to plug-and-print wherever it's needed.
- The 100-sheet multi-purpose tray reliably feeds envelopes, labels, or special media letting you create more types of documents.
- Get on-screen notification and guidance if the printer needs attention or is unable to print your document.



...with power for the small office.

- Printer installation is just a one-click process.
- Expand your paper handling power with the additional 500-sheet feeder. And choose the long-lasting high-capacity print cartridges for minimum printer intervention.
- The robust duty cycle of up to 100,000 pages/month can easily support a busy workgroup with a lot of printing to do.
- Connect to the network and leverage advanced features with Xerox CentreWare software. Access printer and job status, simplified printer installation and network administration.
- Web pages built into the printer (CentreWare IS), are powerful tools to remotely manage, configure and troubleshoot the printer from your computer.

Flexible paper handling

Reliable paper handling is a fine-tuned science at Xerox. You'll see the difference with the Phaser 3450 printer's ability to feed a wide variety of media.

- 1 Use the 100-sheet multi-purpose tray for heavy paper up to 43 lb. card stock (60 - 163 gsm), envelopes, labels, business cards, and other specialty projects.

Money-saving and fast two-sided printing is standard on the D and DN configurations.

- 2 The standard 500-sheet paper tray feeds 17-28 lb. bond (64-105 gsm) paper.
- 3 An available additional feeder adds 500 sheets of input capacity for a total of 1,100 sheets.



Phaser 3450 printer shown
with optional 500-sheet feeder

need more information?

See the 3450 in action. See your Xerox reseller, or visit our web site for more information:

Service & Support. Learn about Total Satisfaction ServicesSM award-winning service:



Imaging Supplies Co. Inc.
804 Woodland Ave
Sanford, NC 27330
(919) 776 1152 (800) 518 1152



| CONFIGURATIONS | 3450B | 3450D | 3450DN |
|--------------------------------|--|----------|---|
| Performance | | | |
| Print speed | Up to 25 pages per minute (ppm) | | |
| First page out | As fast as 12 seconds | | |
| Memory (Std / Max) | 32 MB / 160 MB RAM | | |
| Processor | 266 MHz RISC processor, PostScript Level 3, PCL6 | | |
| Maximum duty cycle | Up to 100,000 pages/month | | |
| Print Quality | | | |
| Print resolution | 1200 Image Quality | | |
| Networking | | | |
| Standard network/ connectivity | Bi-directional Parallel, USB | | Bi-directional Parallel, USB, Internal 10/100Base-TX Ethernet |
| Paper Handling | | | |
| Automatic 2-sided printing | N/A | Standard | |
| Paper input capability | | | |
| Standard | 500-sheet tray and 100-sheet multi-purpose tray | | |
| Optional | 500-sheet feeder | | |
| Productivity | | | |
| Standard features | Watermark, N-Up Printing, Booklet Printing, Separation Pages, Cover Sheets, Auto Tray Select | | |
| | | | Embedded Web Server, Status Monitor |
| Warranty | One year depot, Xerox Total Satisfaction Guarantee | | |

SUPPLIES

| Consumables | |
|---|-----------|
| Standard-Capacity Print Cartridge (average yield 5,000 standard pages) | 106R00687 |
| High-Capacity Print Cartridge (average yield 10,000 standard pages) | 106R00688 |

Print Cartridge Yields: Declared yield values in accordance with ISO/IEC 19752

The print cartridges are part of the Xerox Green World Alliance Supplies Recycling Program. For more information, please visit the Green World Alliance web site at www.xerox.com/GWA

| Options | |
|------------------------------|-----------|
| 500-sheet Feeder (Letter/A4) | 097S03131 |
| Network Interface Card | 097S03130 |
| 32 MB Memory | 097S03132 |
| 64 MB Memory | 097S03133 |
| 128 MB Memory | 097S03136 |
| 8 MB Flash Memory | 097S03134 |

SPECIFICATIONS

Network/Software

Printer management Xerox CentreWare Printer Management, Embedded Web Server

Font capabilities 45 scalable fonts, 1 PCL bitmap font resident

Printer drivers Windows 2000/XP, Windows Server 2003, Windows 98/Me, Mac OS 9.x and higher, UNIX (Linux, Solaris), Novell, Xerox Walk-up Printer Driver

Languages PostScript Level 3, PCL6

Paper handling

Paper input

Tray 1: Multi-purpose tray (Standard)

100-sheets paper, 20 transparencies, 25 labels, 10 envelopes; 16 lb. bond to 43 lb. card stock (60-163 gsm), letter, legal, US folio, executive, statement, US postcard, index card, A4, B5-JIS, ISO-B5, A5, A6 postcard, custom sizes ranging from 3.0 in. – 8.5 in. x 5.0 in. – 14 in., envelopes (monarch, com-10, C5, C6, DL)

Tray 2: 500-sheet tray (Standard)

Tray 3: 500-sheet feeder (Optional)

16 lb. bond to 28 lb. light card stock (60-105 gsm) transparencies, letter, legal, US folio, executive, A4, B5-JIS, ISO-B5, A5

2-sided printing

20 lb bond to 24 lb light card stock (75-90 gsm), letter, legal, US folio, A4

Paper output

250 sheets (face-down)

Special features

Convenience features:

2-sided printing, N-Up, Booklet printing, Poster printing, Fit to Page, Mirrored output, Negative Output, Scaling, Watermarks, Cover Page

Productivity tools for the network:

CentreWare Internet Services provides remote access to diagnostics and troubleshooting information and allows users and administrators to monitor printer and supply status

Status Monitor automatically checks the printer status and sends instant notification to your computer if the printer needs attention

Print Quality Modes Enhanced (1200 dpi Image Quality) Standard (600 x 600 dpi) Toner saver mode (300 x 300 dpi)

Supply Life Indicator The print cartridges have a supply life indicator that prompts you that a supply is low or needs to be replaced

Operating

Dimensions width: 14.96 in./380 mm, height: 12.6 in./320 mm, depth: 17.6 in./447 mm, weight: 33.1 lb/15 kg

Environmental Temperature: Storage: -20° to 40° C / -4° to 104° F; Operating: 10° to 32° C / 50° to 89° F, Relative Humidity: Storage: 10% to 90%, Operating: 20% to 80%, Noise Level: 33 dB(A) standby, 53 dB(A) printing (ISO 7779, DIN EN 27779)

Electrical Sleep mode, ENERGY STAR® Qualified printer, two models: 100-127 VAC, 50/60 Hz; 200-240 VAC 50/60 Hz

Regulatory FCC Part 15 Subpart B, UL listed to UL 1950, UL Certified to CSA—C22.2 No. 950-M93, FDA 21 CFR Sub J, CE Mark applicable to directives 73/23/EEC and 89/336/EEC, TUV - GS Mark, IEC 950 Second Edition (EN 60950, EN 60825)

Customer support

1-year depot warranty, online web technical support and telephone support. Innovative service offerings include a variety of optional Service Agreements. The Phaser 3450 printer is backed by the Xerox Total Satisfaction Guarantee.

