



Serious Business.

Serious Output.



KM-2550

DOCUMENT IMAGING SOLUTION



Imaging Supplies Co. Inc.

804 Woodland Ave
Sanford, NC 27330

(919) 776 1152

(800) 518 1152

www.imagingsuppliesco.com



Document Solutions

KM-2550 | Powerful Document Imaging for Serious Business

KM-2550 Highlights

- 25 Pages Per Minute
- Standard Network Print
- Optional Scan, Optional Fax
- Scan Once Print Many, Electronic Sort
- 300 x 2 Sheet Paper Drawer, 50 Sheet MPT
- Accepts 11" x 17" Paper
- Optional 50 Sheet Document Processor
- Mono-component Technology
- 300K Amorphous Drum Yield
- Long Life Components



For space-saving requirements, the KM-2550 shown without optional drawers or stand.

Today's small-to-medium sized workgroups and businesses are constantly being challenged to raise the bar on productivity. When it comes to serious document imaging, the KM-2550 means business.

The KM-2550 is a powerful and reliable digital imaging system that can handle everyday document demands in a fully networked environment. Easy-to-use yet packed with all the features and functionality your business requires, it offers a wide range of multifunctional capabilities for printing, copying, scanning and faxing. In addition, seamless integration into your existing network and advanced administrative tools provide the ability to intelligently control and manage your company's document workflow.

The KM-2550 is also serious when it comes to Low Total Cost of Ownership. The system features a "Best in Class" long-lasting Amorphous Silicon (ASi) drum, high-yield mono-component toner and long-life components, giving users a greater number of images with fewer interruptions, as well as longer uptime between part replacements.

Increased desktop productivity, less time spent managing paperwork, full network capabilities and a low Total Cost of Ownership – it's easy to see why the KM-2550 is the right choice for businesses that demand the best.

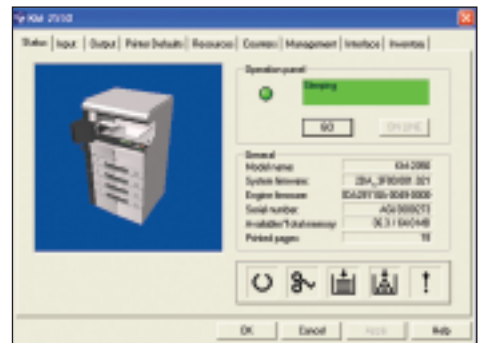
NETWORK/PRINT

Standard Network and Print Capabilities to Enhance Productivity

The KM-2550 offers impressive print capabilities including a print speed of 25 letter size sheets per minute, with crisp, clean 600 x 600 dpi output to enhance the document imaging capabilities of any network. A standard **Network Interface** and **Print Controller** are capable of integrating into virtually any printing environment including PC, MAC, and Linux/Unix, while the ability to support most common software protocols and PDL/Emulations brings added versatility.

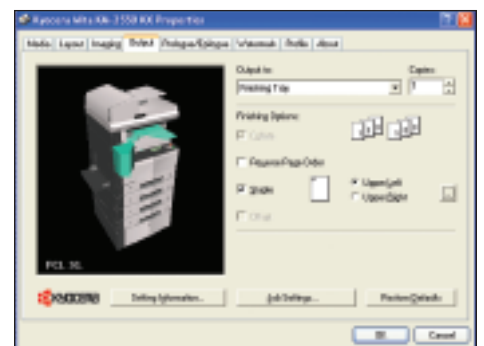
Supporting the KM-2550 are Kyocera-designed **intelligent device solutions**, enabling users to easily set output criteria, while offering administrators the ability to smartly manage their network – all from the convenience of the desktop. The advanced **KX Driver**, common to all Kyocera multi-functionals, ensures consistency, compatibility and integration, regardless of the network system. Users and administrators can effortlessly **customize print settings** and **select output features** from the desktop, enhancing overall document imaging productivity.

The web-based Kyocera Command Center interface facilitates the setting of network parameters and printing by simply entering the assigned IP address. **KM-NET Viewer** and **KM-NET for Client** provide an additional level of support by allowing network administrators to view systems and manage output. For added flexibility, our **PRESCRIBE** solution enables users to create and store forms and letterhead for output as needed, eliminating costly pre-printed materials and the extensive storage space they require.



KM-NET Viewer

Network administrators can monitor and maintain all Kyocera and other SNMP compliant devices directly from the desktop. Oversee network configuration, check paper levels, change device defaults, as well as set auto reporting, e-mail notification, and alerts.



KX Driver

The user-friendly KX Driver features a common interface, allowing users and administrators complete control of the output process.



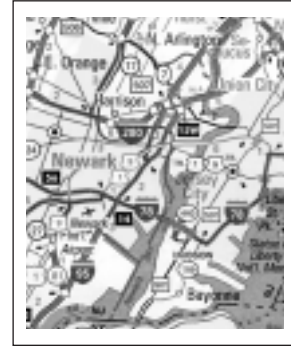
The Kyocera Command Center

Users can easily set network parameters and print specifications by entering assigned IP addresses.

SCAN

Advanced Scanning Enables Enhanced Document Imaging Abilities

The advanced scanning capabilities of the KM-2550 bring document flexibility to any business. Users can quickly scan up to 25 sheets per minute, transforming hard copy into TIFFs or PDFs, with resolutions of up to 600 dpi. **Scan to File** abilities enable these images to be electronically archived, eliminating the need for hard copy filing and storage. To boost productivity even further, the **Scan to E-Mail** feature allows users to transmit their business critical documents instantly to any email address.



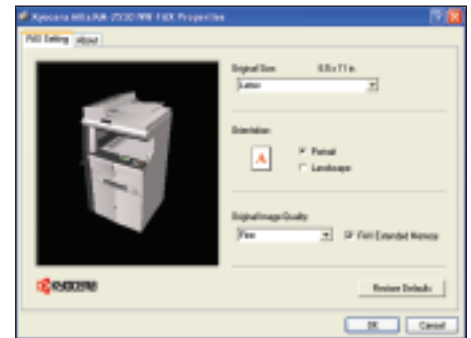
High Resolution Scanning

Documents can be scanned to E-Mail or File as PDF or TIFF images, at resolutions up to 600 DPI.

FAX

Full Fax Capabilities from the Convenience of the Desktop

Equally convenient and economical are the KM-2550's **Super G3 Facsimile** capabilities. A 33.6 Kbps modem and transmission speeds of 2 seconds per page make this system comparable to most standalone fax machines, while offering the added convenience of **Network Fax**. Users can send and receive messages directly from their PC desktop, eliminating the time and paper required to output a document and then transmit it from a standalone machine, and without compromising desirable fax capabilities such as polling, broadcasting, confidential transmit/ receive and address book.



Versatile Network Fax Capabilities

Users can easily send and receive faxes directly from the desktop.

The KM-2550 offers solutions that deliver both the critical document imaging and the low Total Cost of Ownership your business demands. Solid, dependable and capable, it is backed by Kyocera, one of the most respected and recognized names in the industry. From simple documents to complex printing applications, it will take your business productivity to new levels.

Digital Technology Offers Superior Copying

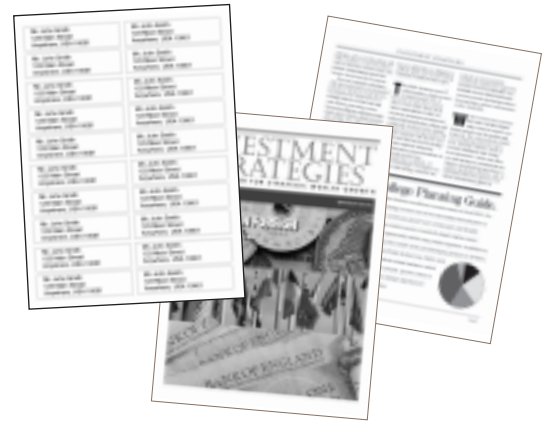
Kyocera's reputation for delivering superior copier systems is unsurpassed in the industry. With output volumes of up to 40,000 pages per month, the KM-2550 was designed with the needs of a highly productive small- to medium-sized workgroup in mind.

Six standard imaging modes and standard 64MB RAM, upgradeable to 256MB, makes the KM-2550 a solid choice when it comes to copier performance. Features such as **auto magnification**, **border erase** and **margin shift** combine with various photo, text and ECO imaging modes to ensure perfect output every time. The KM-2550 comes equipped with 300 x 2 universal sheet paper drawers. Paper tray options expand this capacity to up to 1250 sheets, reducing time spent loading trays. For added versatility, the system also offers an intelligent Multi-Purpose tray that can handle assorted media types, sizes, and weights up to 90 lb. index, avoiding the need to outsource production of many types of documents.

Scan Once Print Many technology, electronic sort, and rotate sort save both time and effort, eliminating manual collating. Optional equipment offers even greater paper handling capabilities:

- **50-sheet Reversing Automatic Document Processor** allows users to scan documents quickly and efficiently.
- **Stackless Duplex Unit** allows users to image in both one-sided and two-sided modes.
- **Internal Finisher** can staple up to 30 sheets of letter-sized paper.
- **Job Separator** allows users to keep copy, print, and fax output conveniently segregated.

The KM-2550 also sets the standard for long life components, with its "Best in Class" 300,000 image **Amorphous Silicon (ASi) drum** and high-yield mono-component toner. The system's ability to ensure a greater number of images with fewer interruptions, combined with its low Total Cost of Ownership, makes the KM-2550 an invaluable asset to a busy, cost-conscious office.



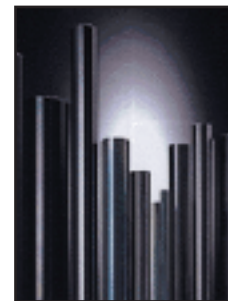
Advanced Imaging Capabilities

No matter what your imaging requirements, the KM-2550 has a range of enhanced features that can accomplish the task.



User-Friendly Control Panel

The KM-2550 intelligently designed control panel gives you complete control over your document output.



Long-Life Components for Low TCO

Kyocera's Mono-component Technology features a "Best in Class" 300,000 image Amorphous Silicon (ASi) drum, ensuring a low Total Cost of Ownership and ease of maintenance.

KM-2550 Specifications

BASIC SPECIFICATIONS:

Configuration:	Desktop Digital Multifunctional with Standard 300 x 2 Sheet Paper Drawers Plus 50 Sheet Multi-Purpose Tray, 64MB Copy Memory for Scan Once Print Many and Electronic Sort, Standard Printing and Network Interface, Optional Network Scan and Fax, Optional 50 Sheet Document Processor, Duplex and Paper Handling.
Resolution:	600 x 600 DPI/ 256 Levels; Fast 1200 Print Resolution
Copier Memory:	Standard 64MB RAM upgradeable to 256MB via 100 Pin DIMMS (1 Slot)
Magnification:	Full Size, Auto Magnification, Plus 25-200% Zoom in 1% Increments
Electrical Requirements:	120V, 60Hz, 9.0A
Dimensions:	(w/o DP) 22.6"W x 23.3"D x 23.9"H (w/ DP) 22.6"W x 23.3"D x 28.6"H
Weight:	120.0 lbs
Max Monthly Volume:	40,000 Pages Per Month

OUTPUT SPEEDS:

Warm-Up Time:	Within 20 Seconds
First Copy Out:	4.9 Seconds
First Print Out:	4.9 Seconds
Pages Per Minute:	25 Letter, 13 Legal, 13 Ledger

PAPER SUPPLY:

Standard Paper Sources:	300 x 2 Sheet Drawers, 50 Sheet MPT
Drawer Paper Size:	5.5" x 8.5" - 11" x 17"
MPT Paper Size:	5.5" x 8.5" - 11" x 17"
Std / Max Paper Capacity:	650/ 1250
Paper Weight:	16-28 lb bond via Paper Drawers, 13 lb Bond -90 lb Index via MPT
Input Materials:	Bond Paper, Recycled Paper, Transparencies, Envelopes

COPY FUNCTIONS:

Imaging Modes:	Auto, Text, Photo, Text / Photo, Manual, ECO
Continuous Copy:	Up to 999, Auto Reset to 1
Additional Features:	Auto Magnification and Paper Select, Scan Once Print Many, Electronic Sort, Rotate Sort, 2 in 1, 4 in 1, Border Erase, Margin Shift, ECO Mode, 100 Management Codes

PAPER HANDLING OPTIONS:

DOCUMENT PROCESSOR: DP-410

Type:	Reversing Automatic Document Feeder
Acceptable Originals:	5.5" x 8.5" - 11" x 17"
Capacity:	50 Sheet RADF
Speed:	25 Originals per Minute
Paper Weight:	13 lb Bond - 90 lb Index
Dimensions/Weight:	21.7"W x 19.0"D x 4.7"H / 13.2 lbs.

DUPLEX: DU-410

Type:	Stackless
Paper Size:	5.5" x 8.5" - 11" x 17"
Paper Weight:	16 - 20 lb Bond
Duplex Modes:	1:2; 2:2; 2:1; Book:2/1

PAPER DRAWERS: PF-410

Paper Capacity:	300 Sheets
Paper Weight:	16 - 28 lb Bond
Paper Size:	5.5" x 8.5" - 11" x 17"
Dimensions / Weight:	22.5"W x 21.2"D x 5.32"H / 15.4 lbs

INTERNAL FINISHER: DF-410

Stack Capacity:	500 Sheets
Paper Size:	5.5" x 8.5" - 11" x 17"
Paper Weight:	16 - 28 lb Bond
Staple Capacity:	30 Sheets: 8.5" x 11"; 20 Sheets 8.5" x 14", 11" x 17"
Dimensions / Weight:	12.2"W x 16.0"D x 6.3"H / 19.8 lbs

ADDITIONAL OPTIONS:

Job Separator, Platen Cover, Copy Stand, 32MB Fax Memory, 16, 32, 64, 128MB DIMM for Copier, 32, 64, 128, 256MB DIMM for Printer
--

CONNECTIVITY:

STANDARD PRINT:

Controller:	Embedded PowerPC750/ 300 MHz Controller
Printer Memory:	Standard 64MB, Upgradeable to 320MB via 100 Pin DIMMS, Optional MicroDrive, Standard CF Card Slot (Type 1)
Supported PDL/Emulations:	PRESCRIBE, PCL6 (PCL XL, PCL 5e), KPDL3 (PS3), KCGL (HP-GL/2), Diablo 630, IBM ProPrinter X24, Epson LQ850, Line Printer
Fonts:	80 Outline Fonts for PCL XL/5e, 136 Outline Fonts for KPDL3, 17 Bitmap Fonts
Windows® OS Compatibility:	Windows® 95/98/Me/NT4.x/2000/XP/2003
Novell® OS Compatibility:	Novell NetWare® 3.x/4.x/5.x/6.x
Mac OS Compatibility:	OS 8.x/9.x/10.x
UNIX OS Compatibility:	Sun OS 4.1.x; Solaris 2.x; AIX, HP-UX (LPR)
Connectivity / Interface:	Standard 10/100BaseTX, Parallel IEEE1284, High Speed USB 2.0
KUIO LV Expansion Slots (1)	Optional 1B-22 Enhanced Wireless NIC
Supported Protocols:	TCP/IP, IPX/SPX, AppleTalk, NetBEUI
Driver:	KX Driver for Windows®, PPD for Mac, PPD for Linux/UNIX, Certified UniDriver
Utilities:	KM-NET Viewer, KM-NET for Client, PDF Direct Print, KM-NET Printer Disk Manager, Kyocera Command Center, PRESCRIBE Utilities

OPTIONAL SCAN:

Resolution:	200, 300, 400, 600 DPI
Scan Speed:	Up to 25 Sheets Per Minute
File Formats:	PDF, TIFF
Connectivity:	NS-30 10/100BaseTX
Supported Protocols:	TCP/IP
Scanning Features:	Scan to PC/File, Scan to Mac, Scan to E-Mail, TWAIN
Driver:	TWAIN Driver
Utilities:	KM Scanner File Utility, Scan to Mac Utility, KM Scanner Address Book, Address Book Editor, Kyocera Command Center

OPTIONAL FAX/NETWORK FAX:

Compatibility:	Super G3
Transmission Speed:	Approximately 2 Seconds per Page
Modem Speed:	33.6 Kbps w/ Auto Fallback
Data Compression:	JBIG, MMR, MR, MH
Fax Memory:	Std 8MB/ Max 40MB
Driver:	KM Network Fax Driver
Utilities:	Address Book for NW Fax, Address Editor for Fax
Additional Features:	Duplex TX/RX, Confidential TX/RX, Polling, Broadcasting, 2 in 1 RX