

# XEROX®

Technology | Document Management | Consulting Services

WorkCentre® C2424



print | copy | scan



**Imaging Supplies Co. Inc.**

804 Woodland Ave

Sanford, NC 27330

800-518-1152

# Three in one, one of a kind



[www.imagingsuppliesco.com](http://www.imagingsuppliesco.com)

# Print. Copy. Scan. Smile.



PRINT



COPY



SCAN



## Busy, busy, busy?

We thought so, so we offer extra trays for added capacity.



## Print to impress.

WorkCentre C2424 delivers amazing quality on virtually any media.



## No time? No worries.

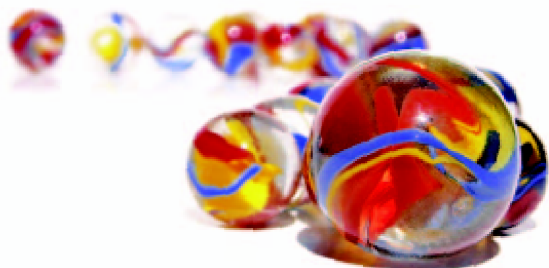
Loading solid ink is as easy as can be.



Introducing the Xerox WorkCentre C2424 color multifunction system. A one-of-a-kind business solution offering printing, copying and scanning – plus, superb solid ink color output – all in one affordable device. No other multifunction delivers such a value-packed combination of performance, versatility and ease of use.

So, look no further busy workgroups – this top performer is ready for business.

# The next big thing



Solid ink color is stunning.  
Images jump off the page!



## Unbelievable functionality at a great price

**High performance tools. Fast output. Vivid solid ink color. All in an incredibly affordable package.**

- Built fast to increase your productivity. Full-page color at up to 24 ppm and as fast as 6 seconds until the first print out.
- Three-in-one value. Advanced printing, copying and scanning seamlessly integrated into one device.
- Advanced efficiency features. Multi-tasking enables you to take on two jobs at once – so if you're printing, you can still scan. Plus the Intelligent Ready feature learns your printing habits and warms up the system when you're most likely to use it.
- You don't pay extra for time-saving features such as automatic two-sided printing, collation, booklet making, save/secure/proof print and extended font storage. These features come standard.

Who wants to wait in line?  
This smart device can process  
new jobs while printing others.



PRINT



COPY



SCAN



The compact desktop model fits in any office.



## in color multifunctions.

### Built for versatility

The WorkCentre C2424 multifunction system gives you more options for all your business tasks.

- From cover weight stock to recycled paper, custom sizes to legal, you can reliably feed the widest range of media.
- Provides fast, versatile prints for everyday jobs. And for knockout resolution when you really want to impress, there's 2400 FinePoint™ print mode. Your copy and print output will never look so good.



- 85,000 page duty cycle. Built with muscle to deliver the reliability and production capacity you need in a busy workgroup.



Go ahead, get creative. Print on business card stock, invitations, transparencies, labels and more. You can expect the same brilliant output no matter what the media.



### Scanning transforms the way you work

Use the power of scanning and your WorkCentre C2424 multifunction to efficiently organize, edit and distribute information. It's as simple as making a copy.

- Scan documents straight to your PC. Edit them now or store them for access later.

- Scan documents to a public folder. This gets them off your desktop and makes them accessible to anyone.
- Scan documents to password protected mailboxes. This allows central storage but restricted access.



extra value

### Scanning tools

On top of our standard scanning functionality, we include a valuable scanning software bundle with the DX configuration.

- **ScanSoft® OmniPage® Pro 12.0 Office** – quickly converts paper documents into editable and searchable digital documents with accurate page layout and format.
- **ScanSoft® PaperPort® Pro 9.0 Office** – utilizes a thumbnail-based Visual Desktop that allows you to instantly view and organize scanned paper, PDFs, TIFFs, MS Office documents and more.
- **Image Retriever** – automatically delivers scanned images back to your desktop, or a network folder.





Solid ink is incredibly environmentally friendly. It generates only 1/40th of the waste of a typical color laser printer.



Enjoy photo-quality resolution so vivid and sharp, you won't believe your eyes.

## Elegantly simple design

**Users and system administrators have it made. This multifunction is the world's easiest to install, manage and use – there's almost nothing to it.**

- Installation and network configuration, including network scanning, is easy – just four clicks and you're done.
- Compact, no mess, solid ink sticks can be dropped into their slots anytime. You can top off the ink levels and never have to worry about running out in the middle of a job.
- Network management made simple. CentreWare® IS embedded Web Server lets you manage, configure and monitor networked devices from anywhere.
- Built smart. Automatic job monitoring helps you track your print job's progress, and an Internet support system enables you to get help quickly should you ever need it.



Easy to load as a stapler – just open and drop!

Keep it simple. Solid ink has one-third of the parts of lasers. That makes it more reliable and easy to use.





CONFIGURATIONS	WorkCentre C2424DN	WorkCentre C2424DP	WorkCentre C2424DX
Speed	Up to 24 ppm color / 24 ppm black-and-white		
Duty Cycle	Up to 85,000 pages per month		
Internal Hard Drive	Standard 40 GB		
Paper Handling	50-sheet Duplex Automatic Document Feeder; Tray 1: 100-sheet capacity; Tray 2: 525-sheet capacity		
Paper input		Tray 3: 525-sheet capacity; Storage Cart	
Paper output	250 sheet, Automatic two-sided		
Copy	As fast as 15 seconds color		
First page out time			
Resolution	600 x 600 dpi		
Print	As fast as 6 seconds in full color		
First page out time			
Resolution	2400 FinePoint™, 600 x 600 dpi		
Memory (standard / max)	256 MB / 1 GB	512 MB / 1 GB	
Processor / PDL	500 MHz Power PC / Adobe PostScript 3, PCL5c		
Connectivity	10/100 BaseTX Ethernet, USB 2.0		
Scan	Scan to mailbox, Scan to TWAIN, Scan to PC		
Scan destinations			
Resolution	300 x 300 dpi	600 x 600 dpi	
Scan speed	Up to 20 pages per minute		
Features			ScanSoft OmniPage Pro 12.0, PaperPort 9.0 and Image Retriever
Security	Secure Print, Hard Drive Overwrite Security, Color Copy Password Protection		
Other Options	Storage Cart, 525-Sheet Feeder, Memory Upgrade, ScanSoft/Image Retriever software bundle	525-Sheet Feeder, Memory Upgrade, ScanSoft/Image Retriever software bundle	525-Sheet Feeder, Memory Upgrade

## SPECIFICATIONS

### Network/Software

**Printer management** Xerox® CentreWare® Printer Management for Microsoft®, Novell® and UNIX®, CentreWare IS Embedded Web Server, CentreWare Web Administrator, Xerox NDPS Gateway, Usage Analysis Tool

**Residential fonts** 137 PostScript Type 1 and 81 PCL5c

**Printer drivers** Windows® PostScript Driver (Windows 98, Windows Me, Windows 2000, Windows XP, Windows Server 2003, Windows NT); PCL5 Driver (Windows 2000, Windows XP); Xerox Walk-Up Printing Driver; Macintosh® OS Driver (OS 9.x or OS X version 10.1 and higher); UNIX Driver (Linux, Solaris)

**Languages** Adobe® PostScript® 3™, PCL5c

### Paper Handling

**Tray 1 (standard):** 100-sheet capacity; 16-40 lb. Bond, 22-80 lb. Cover (60-220 gsm); Supports a wide range of papers, envelopes, labels, transparencies and card stocks; Selectable standard sizes up to Legal (A4), Custom sizes from 3 x 5 in. (76 x 127 mm) to 8.5 x 14 in. (216 x 356 mm)

**Tray 2 (standard),**

**Tray 3 (standard on DP and DX),**

**Tray 4 (optional):** 525-sheet capacity; 16-32 lb. Bond, 22-45 lb. Cover (60-120 gsm); Supports a wide range of papers, envelopes, labels, transparencies; Selectable standard sizes up to Legal (A4)

**Automatic 2-Sided Printing:** 16-32 lb. Bond, 22-45 lb. Cover (60-120 gsm); Selectable standard sizes up to Legal (A4); Custom sizes from 5.5 x 8.3 in. (139.7 x 210 mm) to 8.5 x 14 in. (216 x 356 mm)

**Duplex Automatic Document Feeder (standard):** 16-32 lb. Bond, 22-45 lb. Cover (60-120 gsm); Original sizes: 4.5 x 5.5 in. (114 x 140 mm) to 8.5 x 14 in. (216 x 356 mm)

### Special Features

**Enhanced PrintingScout** instantly displays pop-up help if attention is needed during print jobs.

**Phaser Installer** automatically gets you printing in seconds.

**PhaserSMART®** remote diagnostic tool provides automated Internet-based support.

### Color Controls

**Color standards** PANTONE®-approved solid-color simulations, Adobe PostScript device-independent color, CIE International color standards, and support for ICC and Apple ColorSync® color management systems.

### Operating

**Dimensions** Basic Unit – width: 20.9 in. (53 cm), height: 24.4 in. (62 cm), depth: 26.2 in. (66 cm), weight: 93 lbs. (42 kg)

Optional 525-Sheet Feeder – width: 16.5 in. (42 cm), height: 5.1 in. (13 cm), depth: 20.3 in. (51 cm), weight: 11.5 lbs. (5.2 kg)

Optional Storage Cart – width: 19.7 in. (50 cm), height: 14.2 in. (36 cm), depth: 25.2 in. (64 cm), weight: 62 lbs. (21.7 kg)

**Electrical** 110-120 VAC, 60 Hz; 220 VAC, 50 Hz. ENERGY STAR®-qualified with ES option

**Regulatory** US FCC Class A, Canada ICES-003 Class A, EU CE Class A, CSA Certified to UL/CSA 60950-1, EN60950-1 (Information Technology Equipment)

### Total Satisfaction Services™

Online web technical support and telephone support. Innovative service offerings include optional extended service agreements and custom training for your internal help desk. Backed by the Xerox Total Satisfaction Guarantee.

