

# XEROX®

Technology | Document Management | Consulting Services

Phaser® 7760



color laser printer



**Imaging Supplies Co. Inc.**  
804 Woodland Ave  
Sanford, NC 27330  
(919) 776 1152  
(800) 518 1152  
[www.imagingsuppliesco.com](http://www.imagingsuppliesco.com)

# designer's choice



[www.imagingsuppliesco.com](http://www.imagingsuppliesco.com)

# Phaser<sup>®</sup> 7760

## Tabloid Color Laser Printer



Phaser 7760DN

**High-quality, consistent color** is crucial when you rely on stunning visuals to convey your ideas and concepts. That's why the Xerox Phaser 7760 color printer is the designer's choice. It offers brilliant color, blazing speeds and easy-to-use features that make the most of everything you print.

### Unbeatable performance

When it comes to printing important projects on time, you need both quality and speed. The Phaser 7760 printer is designed for high volume printing and offers impressive print speeds, efficient processing and other time saving features. You get the consistent quality you need, when you need it.

- Printing speeds up to 35 ppm color and 45 ppm black-and-white.
- 800 MHz Power PC processor handles complex, graphic-intensive layout files with ease.
- First-page-out time as fast as 9 seconds for color.
- Up to 1 GB of memory minimizes print queues and keeps production moving.
- Supports custom page sizes, booklet and banner printing, and reliably prints on a wide range of media types and heavy paper weights for maximum project flexibility.

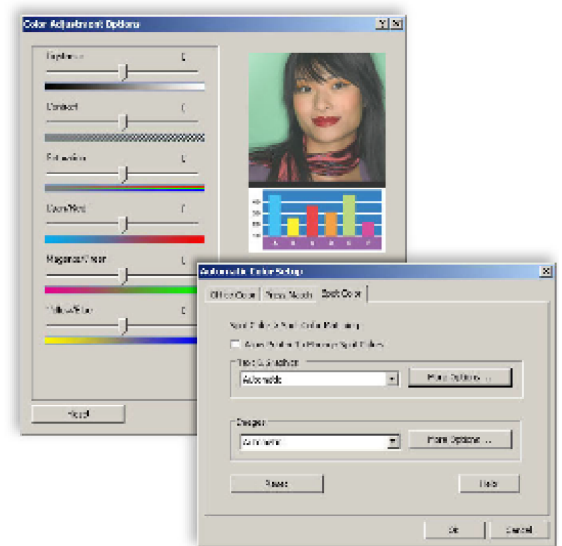
### Quality color you can count on

The color you want is the color you get. This printer features technologies and software that allow you to specify and control the output color, so the results match your expectations. You get consistent color accuracy, sharp images, and crisp text, from the first page to the last.

- Up to 1200 x 1200 dpi resolution for fine line detail and crisp text.
- 600 x 600 x 4 dpi Photo Mode for smooth color transitions, especially flesh tones.
- Glossy, vivid colors and rich, deep blacks.
- Black Trapping ensures that black text on colored backgrounds and colored text on black backgrounds prints sharp and clear.
- TekColor correction helps you simulate output colors of your computer screen, printing press or other device. Color can be managed automatically as well as manually for office graphics, press separations, monochrome graphics and spot colors via an industry-leading driver interface.
- PhaserMatch<sup>®</sup> 4.0 color management and calibration software adds another level of color control and helps maintain color accuracy.
- Incredibly consistent output through-out the length of the print run.



Built in color calibration tools give you the final output you want.



Advanced Color tools allow you to fine-tune output to your specifications.



Large, six-line control panel gives quick access to all print functions and provides help solutions if needed.

## Set up, manage and print with ease

Your busy office or graphics department needs a reliable printer that's easy to operate, requires minimal maintenance and won't slow you down. Simple setup and easy-to-use features of the Phaser 7760 save valuable time and free you up to focus on your work, not your printer.

- Simple automated print driver installation gets you printing in minutes.
- It fits easily into your office, either as a desktop unit or a hard-working floor model with plenty of paper capacity. Both require only front and side access.
- PrintingScout® alerts and media size sensors offer built-in help to ensure your job is printed right.
- PhaserSMART® remote diagnostic tool offers solutions and trouble-shooting help if needed, saving you time.
- CentreWare® Internet Services embedded web server allows you to manage, configure and troubleshoot your printer from any location on the network using a web browser.
- Smart Tray feature provides real-time paper tray status at your desktop – showing available media types and sizes – and automatically selects the correct tray.
- Smart two-sided printing feature automatically detects single-page print jobs and bypasses the duplex unit.



Phaser 7760GX with Professional Finisher

## Advanced finishing and paper handling

- Optional finishers eliminate the effort and expense of collating, folding and stapling by doing it for you.

### Finishing Options



**Sort (Job Offset) and Collate**  
Save valuable time



**Staple**  
Multiple position and placement to enhance usability



**Hole punch**  
Options meet worldwide conventions



**Fold**  
V-fold brochures are folded and ready for distribution



**Booklet**  
Saddle-stitch booklets in-house to reduce costs and eliminate delays

- If you are printing a lot, why keep reloading paper or switching media in the trays? Add a 1,500-sheet or a 2,500-sheet high-capacity feeder.



**Imaging Supplies Co. Inc.**  
 804 Woodland Ave  
 Sanford, NC 27330  
 (919) 776 1152 (800) 518 1152

CONFIGURATIONS	7760DN	7760GX	7760DX
<b>Speed</b>	Up to 35 ppm color / 45 ppm black-and-white		
<b>Duty Cycle</b>	Up to 150,000 pages / month		
<b>Paper Handling</b>			
Paper Input	Tray 1: up to 150 sheets Tray 2: up to 500 sheets Total 650 sheets	Tray 1: up to 150 sheets Tray 2: up to 500 sheets 1,500-sheet High-Capacity Feeder Total 2,150 sheets	Tray 1: up to 150 sheets Tray 2: up to 500 sheets 2,500-sheet High-Capacity Feeder Total 3,150 sheets
<b>Finishing Options</b>	<b>Advanced Finisher:</b> 50-sheet multi-position stapling, 3-hole punch, up to 3,500 sheets <b>Professional Finisher:</b> 50-sheet multi-position stapling, 3-hole punch, saddle-stitch booklet making, v-folding, up to 2,000 sheets		
<b>Automatic 2-sided Printing</b>	Standard		
<b>Print</b>			
First Page Out Time	As fast as 9 seconds color, 6 seconds black-and-white		
<b>Maximum Resolution</b>	up to 1200 x 1200 dpi		
<b>Processor</b>	800 MHz		
<b>Language Support</b>	Adobe® PostScript® 3™, PCL® 5c emulation, Adobe PDF-Direct		
<b>Connectivity</b>	Ethernet 10/100/1000 Base-TX, USB 2.0		
<b>Memory (Std / Max)</b>	512 MB / 1 GB		
<b>Hard Drive</b>	Standard 40 GB (minimum)		
<b>Print Features</b>	Custom Size Pages, Booklet Printing, Banner-size Printing, Smart Trays, Proof, Secure, Saved and Personal Print, Personal Saved, Print With, PDF Direct, Extended Font Storage, Job Collation, PrintingScout®, PhaserSMART®, Intelligent Ready		
	PhaserCal® Color Calibration	PhaserCal® plus PhaserMatch® 4.0 Color Management	
<b>Accounting</b>	Job Accounting, Usage Analysis Tool		
<b>Warranty</b>	One-year On-site Warranty, Xerox Total Satisfaction Guarantee		

Consumables	
<b>Toner Cartridges*</b>	
Black (32,000 pages)	106R01163
Cyan (25,000 pages)	106R01160
Magenta (25,000 pages)	106R01161
Yellow (25,000 pages)	106R01162
<b>Staple Pack</b>	
Stacker Staples (15,000)	008R12941
Booklet Staples (20,000)	008R12925

Routine Maintenance Items	
Imaging Unit (Up to 35,000 pages)	108R00713
Fuser (110 V) (Up to 100,000 pages)	115R00049
Fuser (220 V) (Up to 100,000 pages)	115R00050
Waste Cartridge (Up to 27,000 pages)	108R00575
Transfer Roller (Up to 100,000 pages)	108R00579
Belt Cleaner Assembly	108R00580

Options and Upgrades	
512 MB Phaser Memory	097S03635
1,500-sheet High-Capacity Feeder (three 500-sheet Universal trays)	097S03628
2,500-sheet High-Capacity Feeder (one 500-sheet Universal tray, plus two 1,000-sheet A trays)	097S03629
Advanced Finisher* 3,500 sheets, stacker, stapler, 3-hole punch	097S03630
Professional Finisher* 2,000 sheets, stacker, stapler, 3-hole punch, booklet maker	097S03631
Printer Cart	ZCARTC/A
PhaserMatch 4.0	097S03634

\*Installation by Xerox recommended

**SPECIFICATIONS**

**Features**  
**Font capabilities** 137 Resident PS fonts and 81 PCL  
**Printer drivers** Windows 2000/XP 32 and 64 bit OS, MacOS 9.x/X, version 10.2 or higher, Novell NetWare 4.x/5.x/6.x, UNIX (Linux 5.2+, Sun OS 4.x, Sun Solaris 2.4+, DEC, HP/UX 11.x, IBM AIX 4.2+, SGI, SCO), Xerox Walk-up printing drivers with Windows 2000 or higher  
**Languages** True Adobe® PostScript® 3™, PCL5c emulation with automatic sensing and switching.

**Special Features**  
**PrintingScout** Instantly displays pop-up Help if attention is needed during print jobs.  
**PhaserSMART** provides automated internet-based support.  
**Auto Install** automatically gets you printing over the network in seconds.

**Productivity tools for the user:** Secure Print, Proof Print, Saved Print, Personal Print, Print With, Booklet printing, Scaling, Watermarks, Collation, Separation pages, N-up, Run Black, Smart Duplexing, Intelligent Ready, Remote printing, Configurable Tray 1 Behavior, Job Pipelining, Extended Font Storage.

**Productivity tools for the IT manager:** CentreWare IS Embedded Web Server, MailInX Email Alerts, Printer Neighborhood, CentreWare Printer Management Software, Job Accounting, Usage Analysis.

**Paper Handling**  
**Tray 1:** standard: 150 sheet capacity. 20 lb. Bond to 90 lb. Cover (75–255 gsm), Custom sizes ranging from width of 3.95–12.6" in. (100–320 mm) and length of 5.5–47.25 in. (140–1200 mm) Envelopes: #10, Monarch, A7, DL, C6, C5, C4, B5.

\*Width of 12.6 is limited in length, performance of banner-size printing is affected by media length and media weight

**Tray 2:** standard: 500 sheet capacity. 20 lb. Bond to 80 lb. Cover (75–220 gsm), Custom sizes from 5.5 x 7.15 in. (140 x 182 mm) to 11.7 x 17 in. (297 x 432 mm)

**Tray 3:** standard on GX and DX: 500 sheet capacity. 20 lb. Bond to 80 lb. Cover (75–220 gsm), Selectable standard sizes up to Tabloid/11 x 17 in. (A3/297 x 420 mm)

**Trays 4, 5:** standard on GX: 1,000 sheet capacity. 20 lb. Bond to 80 lb. Cover (75–220 gsm), Selectable standard sizes up to Tabloid/11 x 17 in. (A3/297 x 420 mm)

**Trays 4, 5:** standard on DX: 2,000 sheet capacity. 20 lb. Bond to 80 lb. Cover (75–220 gsm), Letter/ 8.5 x 11 in. (A4/210 x 297 mm and B5/182 x 257 mm)  
 All tray capacities based on Xerox 20 lb Bond

**Automatic 2-sided printing:** 20–40 lb. Bond (75–169 gsm)

**Finishing:** Staples on media up to 32 lb. Bond (80 gsm), Folds and Staples up to 10 booklets of 10 sheets

**Color Controls**  
**Color standards** PANTONE®-approved solid-color simulations, Adobe PostScript device-independent color, CIE International color standards, and support for ICC, ICM and Apple ColorSync color management systems

**Color correction** TekColor Dynamic Correction Color Profiles selectable from the driver: Automatic, sRGB Display, sRGB Vivid, LCD Display, SWOP, Euroscale, Commercial, SNAP, Japan Color, ISO Coated, ISO Uncoated, Black and White, None, and custom color sliders. Plus up to 10 custom TekColor corrections based on device profiles (with PhaserMatch 4.0).

**PhaserMatch 4.0** color management for custom profiles Standard GX and DX, Optional DN.

**Operating**

**Dimensions** (Width x Depth x Height)  
 7760DN: 25.4 x 28.5 x 19.4 in. (644 x 724 x 493 mm), weight: 202 lb. (92 kg)  
 7760GX/7760DX: 25.4 x 28.5 x 33.7 in. (644 x 724 x 857 mm), weight: 7760GX: 268.1 lb. (122 kg), 7760DX: 290.2 lb. (132 kg)  
 Finisher: 25.4 x 35 x 39 in. (644 x 889 x 991 mm), weight: Advanced: 182.6 lb. (83 kg), Professional: 252.6 lb. (115 kg)  
 Cart: 22.25 x 23.75 x 14.7 in. (572 x 602 x 373 mm) weight: 34.6 lb. (15.7 kg)

**Environment Temperature:** Storage: -20° to 48° C (-4° to 122° F); Operating 10° to 32° C (50° to 90° F) Relative Humidity: Storage: 30% to 85%, Operating: 10% to 85%. Noise Level: 33dBA standby, 51 dBA running.

**Electrical** 110V, 50/60Hz model: Consumption: Printing: 616–684 Watts, Standby: 134 Watts, Power Saver: 13 Watts. 220V, 50/60Hz model: Consumption: Printing: 764 Watts, Standby: 135 Watts, Power Saver: 14 Watts, ENERGY STAR® qualified printer.

**Regulatory** FCC Part 15, Subpart A, UL listed to UL 1950, CSA certified to CSA-C35.4 No. 950, CE Mark applicable to directives 73/23 EEC and 89/336/EEC CDRH, EN 55035.

**Total Satisfaction Services**

One-year On-site Warranty, online web technical support and telephone support. Innovative service offerings include optional extended Service Agreements. The Phaser 7760 printer is backed by the Xerox Total Satisfaction Guarantee.

Consumables for the Phaser 7760 are part of the Xerox Green World Alliance Supplies Recycling Program.

**OUTSTANDING MEDIA CAPABILITY**

Take full advantage of the new Phaser 7760 color printer with our comprehensive Xerox Paper and Specialty Media portfolio, which includes a selection of papers, labels and transparencies that come in a variety of weights and sizes.



Copyright © 2006 XEROX CORPORATION. All rights reserved. Contents of this publication may not be reproduced in any form without permission of XEROX CORPORATION. XEROX®, Phaser® PhaserSmart®, PhaserCal®, PhaserMatch®, CentreWare®, TekColor™, PrintingScout™ and Walk-Up™ are trademarks of XEROX CORPORATION in the U.S. and/or other countries. Total Satisfaction Services is a service mark of XEROX CORPORATION. All other trademarks are the property of their respective manufacturers. PANTONE Colors generated may not match PANTONE-identified standards. Consult current PANTONE publications for accurate color. PANTONE®, and other Pantone, Inc. trademarks are the property of Pantone, Inc. PCL® is a registered trademark of Hewlett-Packard. As an ENERGY STAR, partner, XEROX CORPORATION has determined that this product meets the ENERGY STAR guidelines for energy efficiency. The ENERGY STAR name and logo are registered U.S. trademarks. The information in this brochure is subject to change without notice. 5/06 610P724930 7760R-01UA