

**XEROX®**

Technology | Document Management | Consulting Services

black-and-white laser printer

# Printing Powerhouse



**Imaging Supplies Co. Inc.**  
804 Woodland Ave  
Sanford, NC 27330  
(919) 776 1152  
(800) 518 1152

[www.imagingsuppliesco.com](http://www.imagingsuppliesco.com)

Breaks printing barriers,  
not your budget

# Phaser 5500 Laser Printer

The Xerox Phaser 5500 laser printer packs all the power needed to break through even the most demanding productivity barriers – with speed and ease. Uncompromised performance, plus reliability that floors the competition. It wins whenever high print volumes, tight deadlines, and complex applications are the order of the day. Winning the productivity battle has never been easier – and never so affordable.

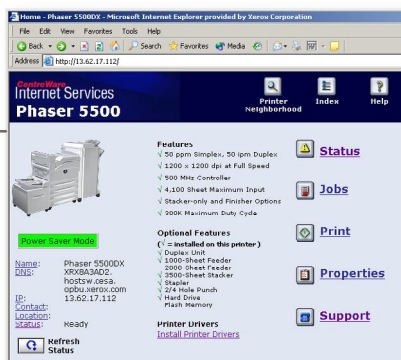


## Productivity plus

Your office needs best-in-class print performance. Count on high-quality output on virtually any media – delivered more quickly, efficiently, and consistently than you ever imagined possible with a network printer.

- 50 ppm print speed. Even duplex won't compromise output performance.
- True 1200 x 1200 dpi at full print speed – a performance benchmark that other printers just can't equal.
- 500 MHz processor delivers complex jobs at lightning speed, even with graphics, images and charts.
- As fast as 3 seconds for the first-page-out. Your job is printing before you take your first step to the printer.
- Convenience features make printing hassles a thing of the past. Intelligent trays, RAM collation, booklet printing, toner tracking, edge-to-edge printing and more, ensure efficiency.
- Productivity tools abound. Job Pipelining keeps job moving by receiving and processing jobs even while printing.

Xerox CentreWare® software provides plenty of management tools for the user and for the network administrators.



## Reliable, intelligent

Dependable, manageable, and robust, the Phaser 5500 printer keeps up with heavy demand every day and is designed to operate smoothly over the long haul. We've considered every angle to ensure the Phaser 5500 will always be the most reliable printer available.

- With an estimated engine life of 3 million impressions, the Phaser 5500 will go the distance with best-in-class operating life.
- Unbelievably easy to add to your network. Phaser Installer does all the work, automatically installing and configuring the printer within minutes.
- Print management made easy with network features, including Embedded Web Server, Email Alerts, Usage Analysis Tool, and Job Accounting, that push productivity boundaries far beyond your expectations.
- PrintingScout alerts you with a pop-up message on your monitor and a step-by-step solution if any roadblock arises during printing.
- The intelligent Phaser 5500 printer helps you troubleshoot via the PhaserSMART® remote diagnostic tool, an automated internet-based support system.
- Xerox stands behind its promise of outstanding reliability and performance with a standard, one-year on-site warranty and the Xerox Total Satisfaction Guarantee.

## Value that's tough to beat

Breakthrough value separates the Phaser 5500 printer from any and all printers in its class. High performance like this, quite simply, has never been available at such a low price. And continuously low operating costs benefit your bottom line throughout the printer lifetime.

- Outstanding low price and low cost-per-page provide unbeatable total cost of ownership.
- To lower printing cost per page, we've separated the print drum and toner, making optimal use of each, and delivering a lower total cost of ownership.
- Proven reliability maximizes savings. You can expect consistent, trouble-free performance.
- Extensive printer management tools, up to 512 MB memory, Adobe® PostScript® 3™, and more, add to best-in-class value.

## Phaser® 5500

### Extensive paper handling and finishing capabilities

Feed the widest range of media — from postcard to tabloid size, from 16 lb bond to 80 lb cover; envelopes, labels, cardstock, and transparencies.

Extensive input and output options ensure maximum printing flexibility.

#### Paper input

- 1 Standard 100-sheet Tray 1 (multipurpose tray) for labels, envelopes and other specialty projects
- 2 Optional duplex unit for cost-saving, automatic two-sided documents
- 3 Two standard 500-sheet trays (adjustable to 11 x 17 in.) keep varied media available for use within single projects and for different requirements of separate projects
- 4 Optional 1,000-sheet feeder provides two additional 11 x 17 in. trays
- 5 Optional 2,000-sheet 8.5 x 11 in./letter feeder (Requires 1000-sheet feeder installed)

#### Paper output

- 6 500-sheet face-down output tray
- 7 Optional 3,500-sheet finisher or stacker/finisher makes high-output jobs simpler and more convenient

## need more information?

Find it at [www.xerox.com/office](http://www.xerox.com/office)

**See it in action.** Visit your Xerox reseller, or see a virtual demo: [www.xerox.com/office/5500demo](http://www.xerox.com/office/5500demo)

**Networking.** Our web site is loaded with details on network cards, protocols and printer management: [www.xerox.com/office/networking](http://www.xerox.com/office/networking)

**Services & Support.** Learn about Total Satisfaction Services™ award-winning programs: [www.xerox.com/office/support](http://www.xerox.com/office/support)



Phaser 5500DX





**Imaging Supplies Co. Inc.**  
804 Woodland Ave  
Sanford, NC 27330  
(919) 776 1152 (800) 518 1152



CONFIGURATIONS	5500B	5500N	5500DN	5500DT	5500DX
Performance					
Print speed	50 ppm simplex, 50 ipm duplex				
First page out	3 seconds (ready mode); 6 seconds (standby mode)				
Memory (Std / Max)	128 MB / 512 MB				256 MB / 512 MB
Processor	500 MHz RISC processor, Adobe® PostScript® 3™, PCL6 and PCL5e emulations				
Internal hard drive	Optional				Standard 20 GB
Maximum duty cycle	Up to 300,000 impressions/month				
Print Quality					
Maximum print resolution	True 1200 x 1200 dpi, 600 x 600 dpi				
Networking					
Network connectivity	Bi-directional Parallel; USB 2.0	Bi-directional Parallel, USB 2.0, 10/100BaseTX Ethernet			
Paper Handling					
Automatic 2-sided printing	Optional		Standard		
Paper input	Tray 1: 100-sheet Multipurpose Tray, Trays 2 and 3: Two 500-sheet Trays				
	Optional			Trays 4 and 5: 1,000-sheet Feeder	
	Optional				Tray 6: 2,000-sheet Feeder
Paper output	500-sheet face down				
	Optional 3,500-sheet Stacker: 3000-sheet stacker and 500-sheet top tray Optional 3,500-sheet Finisher: 3000-sheet stacker and 500-sheet top tray, 50-sheet multi-position stapling and hole punch				3,500-sheet Finisher with Stapling and Hole Punching
Productivity					
Standard features	Phaser Installer, Intelligent Ready, Custom Page Sizes, RAM Collation				
		Embedded Web Server, PrintingScout, Job Pipelining, Remote Printing, Smart Trays, Email Alerts Usage Analysis Tool, Job Accounting, PhaserSMART remote diagnostics, CentreWare Web			
				Booklet Printing	
					Saved/Secure/Proof Print, PDF Direct Print, PhaserHD, Extended Font/Form Storage
Warranty	One year on-site, Xerox Total Satisfaction Guarantee				

## Network/Software

**Printer management:** Xerox CentreWare Printer Management for Microsoft, Novell, and Unix, CentreWare IS Embedded Web Server, CentreWare Web Administrator, Xerox NDPS Gateway, Usage Analysis Tool (Not available on non-networked model.)

**Font capabilities:** 137 resident PS fonts and 81 PCL. Additional 2 MM PS fonts with optional hard disk.

**Printer drivers:** Windows 95/98/Me, Windows NT 4.x, Windows 2000/XP, MacOS 9.x, OS X (version 10.1+), Novell NetWare 3.x/4.x/5.x/6.x, UNIX (Linux 5.2+, Sun OS 4.x Sun Solaris 2.4+, DEC, HP-UX 11.x, IBM AIX 4.2+, SGI, SCO), Xerox Walk-Up Printing Driver

**Languages:** True Adobe® PostScript® 3™, PCL 5e and PCL 6 emulations with automatic sensing and switching

## Paper handling

### Paper Input:

**Tray 1 (MPT):** (standard) 16 – 58 lb. Bond / 80 lb. Cover (60 – 216 gsm), envelopes, postcards, cardstock, labels, index cards, and transparencies. Media sizes: A/Letter, Legal, Executive, Statement, Tabloid, US Folio, Small US Postcard, Large US Postcard, A3, A4, A5, A6, B4-JIS, B5-JIS, B6-JIS, and Custom (size range: 3.5 – 11.7 in. (89 – 297 mm) x 3.87 – 17 in. (98 – 432 mm)).

**Tray 2:** (standard) 16 – 28 lb. Bond (60 – 105 gsm), labels, and transparencies. Media sizes: A/Letter, Legal, Executive, Tabloid, US Folio, Statement, A3, A4, A5, B4-JIS, B5-JIS, and Custom (size range 5.5 – 11.7 in. (140 – 297 mm) x 7.16 – 17 in. (182 – 432 mm)).

**Tray 3:** (standard) 16 – 58 lb. Bond/80 lb. Cover (60 – 216 gsm), postcards, cardstock, labels, index cards, and transparencies. Same media sizes as Tray 2.

**Tray 4-5:** (standard on DT/DX) Same media weight and sizes as Tray 3.

**Tray 6:** (standard on DX) 16 – 58 lb. Bond/80 lb. Cover (60 – 215 gsm), Media sizes: A/Letter, Executive, A4, and B5-JIS.

**Envelope Tray:** (optional, used in place of Tray 2) 16 – 28 lb. Bond (60 – 105 gsm), Envelope sizes: #10 Commercial, Monarch, DL, C5 and custom, Large US Postcard, A6.

**Two-sided printing** (standard in DN/ DT/DX) 16 – 43 lb. Bond (60 – 163 gsm), A/Letter, Legal, Executive, Tabloid, US Folio, A3, A4, A5, B4-JIS, B5-JIS.

### Paper Output:

**Output tray** (500 sheets)

**3,500-sheet Stacker** 3,000-sheet stacker and 500-sheet top tray (optional on B/N/DN/DT)

**3,500-sheet Finisher** 3,000-sheet stacker and 500-sheet top tray plus stapling and hole punching (standard on DX, optional on B/N/DN/DT)

## Special features

**Enhanced Printing Scout** instantly displays pop-up Help if attention is needed throughout print job.

**Phaser Installer** automatically gets you printing in minutes.

**PhaserSMART** remote diagnostic tool troubleshoots problems via an automated Internet-based support system.

**Productivity tools:** Secure Print®, Proof Print®, Saved Print®, Personal Print®, Job Completion Notification, Edge-to-edge printing, Booklet Printing, Negative and Mirror images, Scaling, Auto Fit, Watermarks, Custom size paper, Cover Pages, Collation, Remote Printing, Separation Pages, N-up printing, Image Smoothing, PDF-direct Printing®, Saved Job Repository®, MailInX E-mail Alerts (\*Requires hard disk)

## Operating

**Dimensions:** Width: 25.2 in. (640 mm), Height: 19.6 in. (498 mm), Depth: 20.7 in. (525 mm), weight: 90 lb. (41 kg)

**Environmental:** Temperature 5° to 32° C / 41° to 95° F, Relative Humidity: 15% to 85% (non-condensing), Noise Level: Sound Power: 7.1 Bels printing, 4.1 Bels standby, Bystander Position: 54 db Printing, 22 db standby (ISO 7779, DIN EN 27779)

Consumables	
Toner Cartridge (average yield 30,000 standard pages)	113R00668
Print cartridge yields: Declared yield values in accordance with ISO / IEC 19752	
Routine Maintenance Items	
Drum Cartridge (up to 60,000 pages)	113R00670
Staple Pack (15,000)	108R00710
Maintenance Kit 110V (up to 300,000 pages)	109R00731
Maintenance Kit 220V (up to 300,000 pages)	109R00732
Options	
1,000-Sheet Feeder	097S03218
2,000-Sheet Feeder	097S03219
3,500-Sheet Stacker	097S03221
3,500-Sheet Finisher with stapler and 3 hole puncher	097S03282
with stapler and 2/4 hole puncher	097S03281
Internal Hard Drive	097S03227
128 MB Phaser Memory	097S03123
256 MB Phaser Memory	097S03225
16 MB Flash Memory	097S03125
Duplex Unit	097S03220
Envelope Tray	097S03286
Upgrades	
Phaser 5500B to 5500N Upgrade	097S03222

## ISO Compliant Toner Yields

Print cartridge yields are determined in accordance with ISO/IEC 19752, a standard for testing toner cartridge yields for monochrome laser printers.

**Electrical:** Sleep mode, ENERGY STAR® Qualified, Two models: 110-127 VAC, 50/60 Hz; 220-240 VAC, 50/60 Hz. Consumption (max): Printing: 1150 Watts (120V model) 1300 Watts (220V model), Standby: 100-110 Watts, Power Saver: 10 Watts

**Regulatory:** FCC Part 15 Subpart B; UL listed to UL 60950, UL Certified to CSA-C22.2 No. 60950-00; FDA 21 CFR Part 1010, 1040 – Class 1 Laser Product; Low Voltage Directive 73/23/EEC, EN60950, EN 60825-1 – Class 1 Laser Product; EMC Directive 89/336/EEC, EN 55022 Class B, EN 55024; CB Report – IEC 60950 and IEC 60825-1 Class 1 Laser Product

## Total Satisfaction Services®

1-year On-site Warranty, online web technical support and telephone support. Innovative service offerings include optional extended Service Agreements and custom training for your internal Help Desk. The Phaser 5500 printer is backed by the Xerox Total Satisfaction Guarantee



Copyright © 2005 XEROX CORPORATION. All rights reserved. Contents of this publication may not be reproduced without permission of XEROX CORPORATION. XEROX®, CentreWare®, Phaser®, and DocuPrint® are registered trademarks of XEROX CORPORATION. Phaser® and PhaserSMART® are trademarks of XEROX CORPORATION. Total Satisfaction Services™ is a service mark of XEROX CORPORATION. Adobe®, PostScript®, and Adobe PostScript 3® are trademarks of Adobe Systems Incorporated. All other trademarks are the property of their respective manufacturers. As an ENERGY STAR® Partner, Xerox has determined that this product meets ENERGY STAR guidelines for energy efficiency. The information in this brochure is subject to change without notice. 11/04, 3/05, 8/05 55XBR-01UE