

# XEROX®

Technology | Document Management | Consulting Services

Phaser® 4500

black-and-white laser printer

The printer that  
**expectations**



**Imaging Supplies Co. Inc.**  
804 Woodland Ave  
Sanford, NC 27330  
(919) 776 1152 (800) 518 1152  
[www.imagingsuppliesco.com](http://www.imagingsuppliesco.com)



[www.imagingsuppliesco.com](http://www.imagingsuppliesco.com)

The workgroup printer that works harder,  
works smarter...and does it for less.

# Phaser 4500 Laser Printer

If only everything in your office worked as hard as the Xerox Phaser 4500 laser printer. This monochrome marvel is like the enthusiastic mailroom clerk destined to end up in the plush corner office. With lightning speed, incredible intelligence and a tight-fisted price point, the Phaser 4500 printer outperforms its competitors and sets new standards for productivity.



## Moves as fast as your business

Churn out prints at 36 ppm. Page after page of crisp, clear output, day in and day out. It's the workhorse printer for the buzzing office workgroup.

- Speeds up to 36 ppm makes short work of long and multiple-set print jobs.
- First-page-out time of less than 8 seconds. The Phaser 4500 printer understands that time is money.
- Built around a high-speed 400 MHz PowerPC processor, with up to 256 MB memory, true Adobe® PostScript® 3™, and an optional hard drive (20 GB minimum) for blazing performance.
- True 1200 dpi and 600 dpi output makes fine detail stand out, even on photo grayscale images.

## Uncommon intelligence, built right in

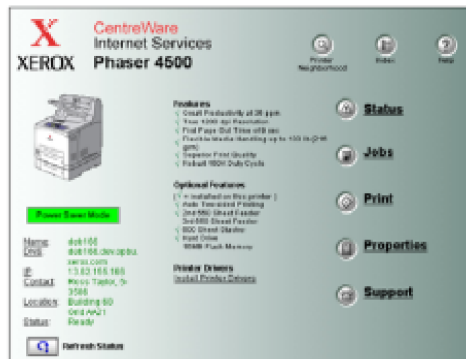
This office dynamo practically installs itself, and improved print drivers and software suite make sure that it's always enhancing productivity.

- Print driver installs in four mouseclicks; networked models can be installed and configured over the Web.
- Toner levels can be monitored from the printer's front panel, driver or embedded web page.
- Input trays sense the presence and thickness of most standard types of paper and specialty media, including letter, legal, A4 and A5.

## A printer that earns its keep

The Phaser 4500 printer sets new standards for reliability and low cost-of-ownership, that only add to its unbeatable bottom-line value.

- 150,000-print duty cycle supports the heaviest office workloads.
- Longer-lasting print cartridges decrease printer interventions.
- Engineering improvements reduce weight by 30% and decrease number of moving parts.
- Proven reliability backed by a 1-year on-site warranty and the unmatched Xerox Total Satisfaction Guarantee.



## need more information?

Find it at [www.xerox.com/office](http://www.xerox.com/office)

**See it in action.** Visit your Xerox reseller, or see a virtual demo: [www.xerox.com/office/4500demo](http://www.xerox.com/office/4500demo)

**Industry Awards.** The predecessor to the Phaser 4500 printer, the Phaser 4400 earned industry lauds, including PC World's Best Buy award, and Editor's Choice honors from CNET.com and ZDNet

**Networking.** Our web site is loaded with details on network cards, protocols and printer management: [www.xerox.com/office/networking](http://www.xerox.com/office/networking)

**Services & Support.** Learn about Total Satisfaction Services<sup>SM</sup> award-winning programs: [www.xerox.com/office/support](http://www.xerox.com/office/support)

## Smart printing, smart engineering

When you connect a Phaser 4500 printer to your network, you can take advantage of Xerox CentreWare<sup>®</sup> software. It provides quick and convenient access to a wealth of features, including printer and job status, in-depth accounting information, simplified printer installation and network administration.

- Printer administrators will benefit from **CentreWare IS Embedded Web Server** to manage printers from anywhere using a web browser.
- Secure printing lets you delay output of confidential jobs at the printer until you're ready to pick them up (hard drive required).
- The Phaser 4500 printer stays in touch with system administrators by sending **Email Alerts** when attention is needed. It can even be set up to send a message to your network administrator when supplies get low.
- Instant pop-up help messages appear on your monitor if printing problems arise, thanks to **PrintingScout**.
- The smart Phaser 4500 printer can help users troubleshoot on their own, using the unique **PhaserSMART<sup>®</sup>** internet-based automated support system.

## Flexible and reliable paper handling

- 1 The 150-sheet Tray 1 (standard) handles up to 133 lb (216 gsm) heavy paper/cover stock.
- 2 The 550-sheet Tray 2 (standard) allows you to add a full ream of paper before the tray is empty. Plus, the auto size-sensing technology of the Phaser 4500 printer senses the size of most media types.
- 3 Add one or two additional 550-sheet feeders to boost your capacity to 1,800 sheets.

Optional two-sided (duplex) printing is automatic and fast.



Phaser 4500DT





**Imaging Supplies Co. Inc.**  
804 Woodland Ave  
Sanford, NC 27330  
(919) 776 1152 (800) 518 1152



CONFIGURATIONS	4500B	4500N	4500DT	4500DX
Performance				
Print speed	Up to 36 pages per minute (ppm)			
First page out	As fast as 8 seconds			
Memory (Std / Max)	48 / 240 MB RAM	64 / 512 MB RAM		
Processor	400-MHz RISC processor, Adobe® PostScript® 3™, PCL5e, PCL 6 emulation			
Internal hard drive	Optional			Standard
Maximum duty cycle	Up to 150,000 pages/month			
Print Quality				
Maximum resolution	True 1200 x 1200 dpi			
Networking				
Network connectivity	Bi-directional Parallel, USB	10/100BaseTX Ethernet, Bi-directional Parallel, USB		
Paper Handling				
Automatic 2-sided printing	Optional		Standard	
Paper input capability	150-sheet Tray 1; 550-sheet Tray 2			
Standard			Additional 550-sheet tray	
Paper output capability	500-sheet output tray			
Standard				500-sheet stacker w/offset
Productivity				
Standard features	Smart trays, Custom size pages, Phaser Installer, Edge-to-edge printing, Job Pipelining with Compression			
		Embedded Web Server, Remote printing, E-mail alerts, Enhanced PrintingScout, PhaserSMART, Job Accounting, Usage Analysis Tool		
			Booklet printing	
				Proof/Secure/Saved print, PDF-direct, Extended font storage
Warranty	One year on-site, Xerox Total Satisfaction Guarantee			

#### Network/Software

**Printer management:** Xerox CentreWare Printer Management for Microsoft, Novell and Unix, CentreWare IS Embedded Web Server, CentreWare Web Administrator, Xerox NDPS Gateway, Usage Analysis Tool (not available on non-networked model)

**Font capabilities:** 39 Resident PS fonts and 81 PCL. Additional 97 PS fonts with optional hard disk.

**Printer drivers:** Windows 95/98/Me, Windows NT 4.x, Windows 2000/XP, MacOS 8/9/X version 10.1, Novell NetWare 3.x/4.x/5.x/6.x, UNIX (Linux 5.2+, Sun OS 4.x, Sun Solaris 2.4+, DEC, HP/UX 11.x, IBM AIX 4.2+, SGI, SCO)

**Languages:** True Adobe PostScript 3, PCL 5e and PCL 6 emulations with automatic sensing and switching

#### Paper handling

##### Paper input:

Tray 1: (standard) 16 lb. Bond – 133 lb. Tag Card Stock (60 – 216 gsm), bond, cardstock, labels, index cards, greeting cards, transparencies and envelopes. Media sizes: A/Letter, Legal, Executive, Statement, US Folio, A4, A5, A6, B5 JIS, B5 ISO, 3 x 5 in. Index Cards and Custom sizes; Envelopes: #10 Commercial, DL, C5, B5 and Monarch.

Tray 2 – 4: (standard) 16 lb. Bond – 133 lb. Tag Card Stock (60 – 216 gsm), bond, cardstock, labels, greeting cards, transparencies and envelopes. Media sizes: A/Letter, Legal, Executive, Statement, US Folio, A4, B5 JIS, B5 ISO and Custom sizes; Envelopes: #10 Commercial, DL, and C5.

**2-sided printing** (requires optional Duplex Module): 16 – 30 lb. paper (60 – 216 gsm), letter, legal, A4, 3.5 – 8.5 in. x 5.8 – 14 in. (90 – 216 mm x 148 – 356 mm).

##### Paper output:

Output tray (500 sheets)

**500-sheet Stacker with offset:** (standard on 4500DX): accepts all media accepted in Trays 1 – 4.

#### Special features

**Enhanced PrintingScout** instantly displays pop-up Help if attention is needed throughout print job.

**Phaser Installer** automatically gets you printing in minutes.

**PhaserSMART** remote diagnostic tool troubleshoots problems via an automated internet-based support system.

**Productivity tools:** Secure Print™, Proof Print™, Saved Print™, Edge-to-edge printing, Booklet Printing, Negative and mirror images, Scaling, Auto Fit, Watermarks, Custom size paper, Cover Pages, Collation Printing™, Remote Printing, Separation Pages, N-up printing, Load-while-run, PDF-direct Printing™, Saved Job Repository™, MailInX E-mail Alerts (\*Requires hard disk)

#### Operating

**Dimensions:** Width: 16.6 in (422 mm), height: 17.3 in (404 mm), depth: 18.3 in (465 mm), weight: 45.2 lb (20.5 kg)

**Environmental:** Temperature 5° to 35° C / 41° to 95° F, Relative Humidity: 15% to 85% (noncondensing), Noise Level: 4.3 B(A) standby, 6.9 B(A) running (ISO 7779, DIN EN 27779)

**Electrical:** Sleep mode, ENERGY STAR® Qualified, two models: 110-127 VAC, 50/60 Hz; 220-240 VAC, 50/60 Hz. Consumption (max): Printing: 675 Watts, Standby: 80 Watts, Power Saver: 18 Watts

**Regulatory:** FCC Part 15 Subpart B, UL listed to UL 1950, UL Certified to CSA—C22.2 No. 950-M95, FDA 21 CFR Sub J, CE Mark applicable to directives 73/23/EEC and 89/336/EEC, TUV – GS Mark, IEC 950 Second Edition (EN 60950, EN 55022)

#### Total Satisfaction Services

1-year on-site warranty, online web technical support and telephone support. Innovative service offerings include optional extended Service Agreements and custom training for your internal Help Desk. The Phaser 4500 printer is backed by the Xerox Total Satisfaction Guarantee.

#### SUPPLIES

Consumables	
Standard-Capacity Print Cartridge	113R00656 (average yield 10,000 standard pages)
High-Capacity Print Cartridge	113R00657 (average yield 18,000 standard pages)

**Print Cartridge Yields:** Declared yield values in accordance with ISO/IEC 19752

The print cartridges are part of the Xerox Green World Alliance Supplies Recycling Program. For more information, please visit the Green World Alliance web site at [www.xerox.com/GWA](http://www.xerox.com/GWA)

Routine Maintenance Items	
Maintenance Kit (110V)	108R00600
Maintenance Kit (220V)	108R00601
Options/Upgrades	
Phaser 4500B to 4500N Upgrade	097S03146
550-sheet feeder	097S03127
Duplex Module	097S03128
500-sheet stacker with Offset	097S03129
Hard Disk (20 GB)	097S03126
64 MB Phaser Memory	097S03122
128 MB Phaser Memory	097S03123
Flash Memory DIMM	



Adobe® PostScript® 3™



TOTAL  
SATISFACTION  
SERVICES™



XEROX  
TOTAL  
SATISFACTION  
GUARANTEE



Copyright © 2006 XEROX CORPORATION. All rights reserved. Contents of this publication may not be reproduced without permission of XEROX CORPORATION. XEROX®, CentreWare®, and DocuPrint® are registered trademarks of XEROX CORPORATION. Phaser® and PhaserSMART™ are trademarks of XEROX CORPORATION. Total Satisfaction Services™ is a servicemark of XEROX CORPORATION. Adobe®, PostScript®, and Adobe PostScript 3™ are trademarks of Adobe Systems Incorporated. All other trademarks are the property of their respective manufacturers. As an ENERGY STAR® Partner, Xerox has determined that this product meets ENERGY STAR guidelines for energy efficiency. The information in this brochure is subject to change without notice. 5/06 610P718060F 45XB-R01UH

[www.imagingsuppliesco.com](http://www.imagingsuppliesco.com)