

XEROX®

CopyCentre®
C118

WorkCentre®
M118/M118i

Technology | Document Management | Consulting Services

copy | print | fax | email



Imaging Supplies Co. Inc.

804 Woodland Ave

Sanford, NC 27330

(919) 776 1152

(800) 518 1152

www.imagingsuppliesco.com

Can-do performance...
**all day,
every day**



www.imagingsuppliesco.com

CopyCentre C118

WorkCentre M118/M118i

Convenience without compromise

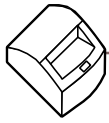
When it comes to meeting your business needs, Xerox has you covered — from a full-featured, tabloid-size copier all the way up to a high-performance multifunction system that can copy, print, fax and scan-to-email. These office dynamites get all your jobs done right, every time. They're adaptable, convenient, reliable — and always ready for business.

Technologically advanced

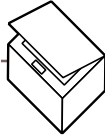
With cutting-edge, high-performance features, the Xerox CopyCentre C118 copier and WorkCentre M118/M118i multifunction keep productivity in high gear.

- Outstanding image quality for crisp, impressive copies and prints — thanks to our patented EA toner.
- State-of-the-art SMart Kits keep downtime to a minimum. They signal the device to tell you ahead of time when you'll need to replace a toner or drum cartridge. This way you can have all the supplies you need on hand and ready.
- Industry leading device management allows administrators to configure network settings, control users' access, manage print job queues and track the status of consumables from a remote location (networked models).
- Lightning fast scans — up to 44 images per minute (in 200 dpi mode) — get the job done ahead of schedule.
- ScanSoft OmniPage™ and PaperPort™ software (WorkCentre M118i) make it simpler than ever to turn paper into editable digital files. Storing, organizing and distributing documents are a breeze.

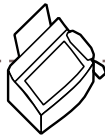




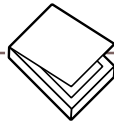
Print



Copy



Fax



Scan-to-email

Easy to use

These Xerox devices are built to simplify your everyday tasks.

- Enjoy a simple scan-to-email solution to increase productivity by sending documents directly to your desktop (WorkCentre M118i).
- Save time with one-touch speed dials and group dials for fast fax connections (WorkCentre M118i).
- Fits in anywhere. The small footprint of the M118i makes it the perfect multifunction for space-conscious offices.
- Integrated installation tools and auto IP setup make it easy to get it up and running.

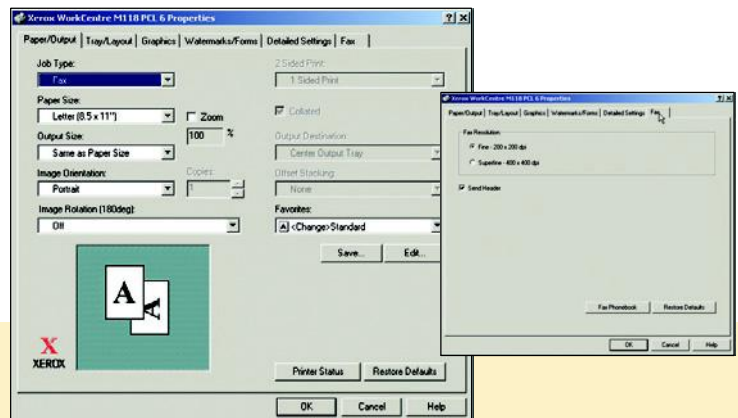
All-around flexibility

Whatever your needs, Xerox devices seamlessly adapt to any office role.

- Reliably feeds a wide range of media. From tabloid-size paper to transparencies and heavy-duty card stock (up to 110 lb. Index).
- Expandable paper capacity means busy workgroups can add trays as workloads increase.
- There are so many options to choose from. Configure as an independent copier (CopyCentre C118), a robust copier-printer (WorkCentre M118), or a comprehensive printing, copying, faxing and scan-to-email system (WorkCentre M118i).



Choose from a desktop or console configuration for more convenience.



Fax with ease from your desktop

With the WorkCentre M118i multifunction you can send faxes without even leaving your desk. Faxing a document from your PC is as easy as printing it.

You can also take advantage of 2-up faxing. That means you can fax two pages on one – a real cost saver.

CopyCentre®
C118

WorkCentre®
M118/M118i



Imaging Supplies Co. Inc.
804 Woodland Ave
Sanford, NC 27330
(919) 776 1152
(800) 518 1152

Duplex Auto Document Feeder Option



Platen Cover Option



Additional One plus Two Tray Option



Additional One Tray Option



Stand Option



CONFIGURATIONS	CopyCentre® C118	WorkCentre® M118	WorkCentre® M118i
Speed	18 ppm		
Duty Cycle (pages/mo)	Up to 50,000		
Paper Handling			
Paper trays			
Standard	250-sheet Tray, 100-sheet Bypass Tray (Total 350 sheets)		
Optional	One Tray Option: 500-sheet Tray (Total 850 sheets) One plus Two Tray Option: Three 500-sheet Trays (Total 1,850 sheets)		
Paper output	250 sheets, Optional automatic two-sided		
Copy			
First page out time	7.4 seconds		
Resolution	600 x 600 dpi		
Print			
First page out time	NA	<15 seconds	
Resolution	NA	600 x 600 dpi	
Processor	NA	Power PC 300 MHz	
Connectivity	NA	USB 2.0, 10/100 BaseTX Ethernet, Parallel (IEEE 1284)	
PDL Support	NA	PCL6, PCL5e	PCL6, PCL5e, Adobe® PostScript® 3™
Fax			
Speed	NA	NA	33.6 Kbps
Compression	NA	NA	JBIG, MH, MR, MMR
Resolution	NA	NA	600 dpi
Scan-to-email			
Resolution	NA	NA	200 dpi, 400 dpi, 600 dpi

Paper Size

Minimum: 3.5 x 3.8 in. / 89 x 98.4 mm
Maximum: 11 x 17 in. / 297 x 420 mm

Paper Weight

Tray 1: 16 lb. bond – 60 lb. index / 60 gsm – 90 gsm
Tray 2, 3, 4: 16 lb. bond – 110 lb. index / 60 gsm – 216 gsm
Bypass Tray: 16 lb. bond – 110 lb. index / 60 gsm – 216 gsm

Physical Dimensions (WxDxH)

25 x 20.3 x 19 in. (640 x 520 x 487 mm) – Base Unit with Platen Cover
25 x 20.3 x 22 in. (640 x 520 x 563 mm) – Base Unit with DADF or ADF
25 x 20.3 x 26.2 in. (640 x 520 x 672 mm) – Base Unit with One Tray Option with DADF
25 x 20.3 x 41.5 in. (640 x 520 x 1065 mm) – Base Unit with One Plus Two Tray Option with DADF
Weight: 107.8 lbs. (49 kg) – Base Unit

Device Management

CentreWare Internet Services (Networked Products), CentreWare Web, CentreWare DP, NDPS and HP Openview

Operating Environment

Temperature
Maximum Range: 41° – 95°F/10° – 32°C
Recommended Range: 60.8° – 86°F/16° – 30°C
Humidity
Maximum Range: 15 – 85%
Recommended Range: 30 – 70%
Electrical
Power: 110V – 127V, 50/60 Hz or 220V – 240V, 50/60 Hz
Power Consumption:
Average: 1320 VA – 1920 VA
Energy Saver: ENERGY STAR® Compliant

Supplies

Approximate Yields
Toner – Starter kit: 9,000 images*
Replacement kit: 11,000 images*
Drum Cartridge: 60,000 images*
*Capacities are approximate, based on 5% coverage on a letter/A4-sized page and dependent on customer job mode run length.

Agency Approvals/Approvals

Safety: UL Safety
North America: cULus approval
Europe: CE, Nemko
Russia: Gost
Mexico: Nom

Copying

Speed: 18 copies per min. (Letter/A4)
Resolution: 600 x 600 dpi
First Copy Out: 7.4 seconds
Full Duplex Option: Yes (1-2, 2-2, 2-1)
Reduce/Enlarge: 50 – 200% in 1% increments
Productivity: Scan Once Print Many, Electronic Pre-Collation
Multiple Copies: Up to 99 copies of multiple page originals
Auditron: Up to 50 accounts
Option: Foreign Device Interface

Print Drivers: Windows 95/98/NT4.0/2000/Me/XP
Interfaces: USB 2.0 standard; IEEE 1284, 10/100 BaseTX Ethernet, Wireless LAN (IEEE 802.11) via third party wireless equipment

Text and Halftone: 1 bit
Bundled OCR Software: PaperPort® SE 9.0, OmniPage® SE v2.0

Faxing (WorkCentre M118i)

Transmission Speed: 33.3 Kbps w/JBIG
Communication Mode: Half Duplex
Modem Speed: 33.6 Kbps
Data Compression: JBIG, MMR/MR/MH
Resolution: 600 dpi
Halftones: 256 levels
Secure Fax: Receive (F-code)
Dialing
Speed Dial: Up to 200 supported
One-Touch Dial: Up to 54 supported
Broadcast Dialing: Up to 30 supported

Device Memory

CopyCentre C118: 32 MB
WorkCentre M118: 96 MB (Copy: 32 MB, Print: 64 MB)
WorkCentre M118i: 288 MB (Copy/Fax: 96 MB, Print/Scan: 192 MB)

Media Handling

Input Paper Capacity
Standard: One Tray (250 sheets); Bypass Tray (100 sheets)
Optional: One Tray (500 sheets), Three Trays (500+500+500 sheets)
Auto-Tray Switching Capable
Document Handler
Document Handler: 50 Sheets
Output Tray Capacity: 250 Sheets
Media Types: Paper, envelopes, labels, transparencies (Bypass only)

Scan-to-email

(WorkCentre M118i)
Scan Resolution: Up to 600 x 600 dpi
Speed: Up to 44 ipm (200 dpi)
Depth: 1 bit

Printing (WorkCentre M118, WorkCentre M118i)

Technology: Laser black-and-white
Speed: 18 ppm Letter/A4
Resolution: 600 dpi
First Print Out: <15 seconds
Duplex Option: Yes
Page Description Language (PDL): PCL6; PCL5e; Adobe® PostScript® 3™ (M118i only)



© 2005 Xerox Corporation. All rights reserved. Xerox®, CopyCentre® and WorkCentre® are registered trademarks of Xerox Corporation. In support of Xerox's environmental leadership goals, these models may contain some recycled components that are reconditioned. OmniPage® and PaperPort® are registered trademarks of ScanSoft, Inc. ENERGY STAR® is a registered mark. Adobe® and PostScript® are registered trademarks of Adobe Systems Incorporated. As an ENERGY STAR® Partner, Xerox Corporation has determined that these products meet the ENERGY STAR® guidelines for energy efficiency. Terra Choice Environmental Services, Inc., of Canada has verified that these products conform to all applicable Environmental Choice EcoLogo requirements for minimized impact to the environment. Product information and/or specifications are subject to change without notice. 4/05, 7/05 610P722180A W18BR-01UB